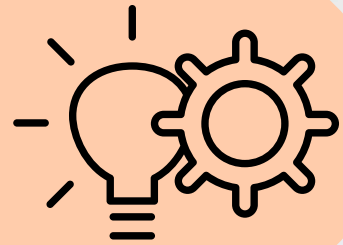


CUSTOM ENGINEERING

Developing a bespoke product at Flowplant involves a structured process to ensure that customer requirements are met effectively:

1. INITIAL CONSULTATION

We start by understanding your specific needs, challenges, and desired outcomes. This involves detailed discussions and sometimes site visits to gather comprehensive information.



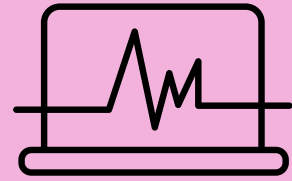
2. CONCEPTUAL DESIGN

Based on the gathered information, our engineering team creates initial concept designs. These designs are reviewed and refined in collaboration with you to ensure alignment with expectations.



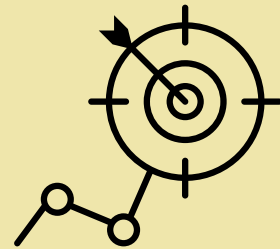
3. DETAILED ENGINEERING

Once the concept is approved, detailed engineering begins. This phase involves creating detailed drawings, specifications, and technical documentation. Our engineers ensure that the product meets performance requirements and complies with relevant standards.



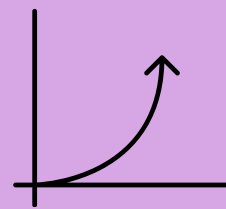
4. DEVELOPMENT

Development of the bespoke product is then started following sign off of the detailed drawings. This stage allows us to verify functionality, performance, and durability under real-world conditions.



5. TESTING AND VALIDATION

The unit undergoes rigorous testing to ensure it meets all specified criteria and performs reliably. This may include performance testing, safety testing, and compliance with industry standards.



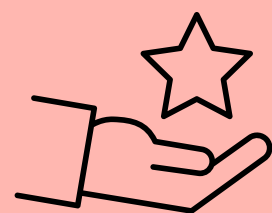
6. REFINEMENT AND FINALISATION

Based on test results and customer feedback, refinements may be made to the design. Once all requirements are met, the unit is signed off ready for dispatch.



7. CUSTOMER SUPPORT

Post-delivery, Flowplant provides ongoing technical support, training, and maintenance services as needed to ensure the continued performance and satisfaction with the bespoke product.



Throughout this process, clear communication, collaboration, and adherence to timelines are key principles that guide the development of bespoke products at Flowplant. Each step is meticulously executed to deliver tailored solutions that meet the unique requirements of our customers.